

AT-130

INSTALLATION MANUAL

Document revision: 1.1
Last revised: March 17, 2021

APPAREO



AT-130 Installation Manual

© 2020-21 Appareo Systems, LLC. All Rights Reserved.

AT-130 Installation Manual. All content within is copyrighted by Appareo Systems, LLC, and may not be reprinted without permission.

The content of this manual is furnished for informational use only, is subject to change without notice, and should not be construed as a commitment by Appareo Systems. Appareo Systems assumes no responsibility or liability for any errors or inaccuracies that may appear in the content contained in this guide.

AT-130, Appareo, Appareo Systems, and the Appareo logo are trademarks or registered trademarks of Appareo Systems. All other trademarks are property of their respective owner.

Appareo Systems, 1810 NDSU Research Circle North, Fargo, ND 58102 USA.

Visit us online at www.appareo.com
Questions? E-mail us at support@appareo.com

Record of Revision

Revision Number	Change Description	Revision Date	Inserted By
1.0	Initial release	2/26/21	AAL
1.1	Clarified orientation instructions and bolt size.	3/17/21	AAL

1. Compliance

- This device complies with part 15 of the FCC Rules and applicable RSS standards. Operation is subject to the following two conditions: (1) This device may not cause harmful interference, and (2) this device must accept any interference received, including interference that may cause undesired operation.
- Le présent matériel est conforme aux CNRExempts de licence d'Industrie Canada. Son fonctionnement est soumis aux deux conditions suivantes: (1) cet appareil ne peut pas provoquer d'interférences, et (2) cet appareil doit accepter toute interférence, y compris celles susceptibles de provoquer le fonctionnement du dispositif.
- Cet appareil contient des émetteurs / récepteurs exempts de licence qui sont conformes aux RSS exemptes de licence d'Innovation, Sciences et Développement économique Canada. Son fonctionnement est soumis aux deux conditions suivantes: Cet appareil ne doit pas provoquer d'interférences. Cet appareil doit accepter toute interférence, y compris les interférences qui peuvent provoquer un fonctionnement indésirable de l'appareil.
- Note: This equipment has been tested and found to comply with the limits for a Class B digital device, pursuant to part 15 of the FCC Rules. These limits are designed to provide reasonable protection against harmful interference in a residential installation. This equipment generates, uses and can radiate radio frequency energy and, if not installed and used in accordance with the instructions, may cause harmful interference to radio communications. However, there is no guarantee that interference will not occur in a particular installation. If this equipment does cause harmful interference to radio or television reception, which can be determined by turning the equipment off and on, the user is encouraged to try to correct the interference by one or more of the following measures:
 - Reorient or relocate the receiving antenna.
 - Increase the separation between the equipment and receiver.
 - Connect the equipment into an outlet on a circuit different from that to which the receiver is connected.
 - Consult the dealer or an experienced radio/TV technician for help.
- Changes or modifications not expressly approved by the party responsible for compliance could void the user's authority to operate the equipment.
- In order to comply with FCC and ISED RF Exposure requirements, this device must be installed such that a minimum separation distance of 20 cm is maintained between it and all persons during normal operation.
- Afin de se conformer aux exigences d'exposition aux RF de la d'ISDE, cet appareil doit être installé de telle sorte qu'une distance de séparation minimale de 20 cm soit maintenue. entre lui et toutes les personnes pendant le fonctionnement normal.
- FCC ID: 2AETC-AT130

2. About AT-130

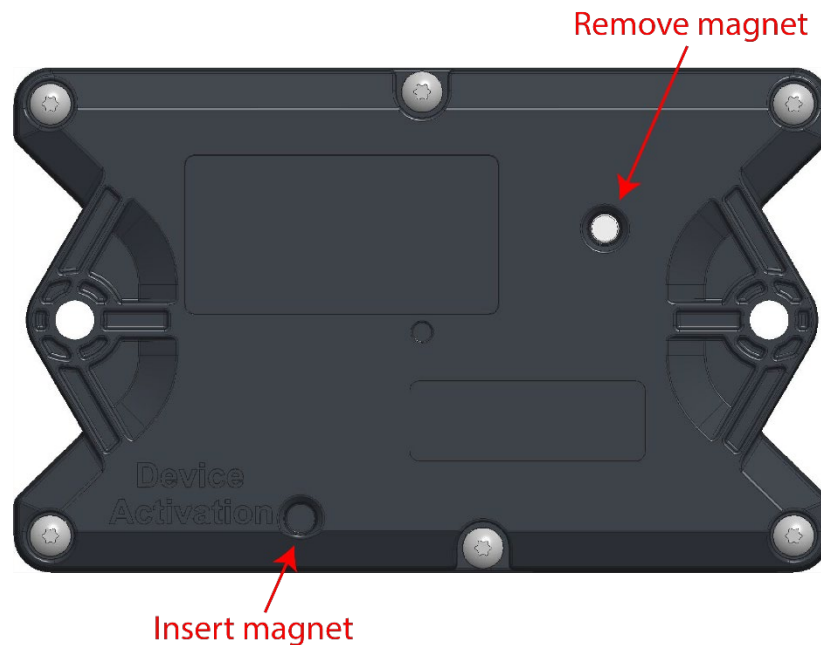
The Appareo Asset Tracker, model AT-130 is a cost-effective, cellular, IP69K-rated asset tracking device with ultra-long battery life and industrial operating temperature range (-40 °C to +85 °C).

3. Activating AT-130

In order to use AT-130, you need to activate it.

1. Peel off the clear label covering the magnet on the back of the unit as shown below. Flip over the unit to remove the magnet.
2. Put the magnet in the Device Activation slot for five seconds. Check your asset tracking software to confirm that the device is activated (it should appear within 5-10 minutes if the unit is outside with the logo facing up).

Once the device is activated, discard the magnet.



4. Installing AT-130

Installation Location

Choose an installation location that meets the following specifications:

- Mounted on a clean, flat surface.
- Mounted as high up as possible.
- Mounted in one of the following orientations:
 - **Best:** Mount the unit so that the top of the unit (the side that does not have the Device Activation text on it) has a clear view of the sky (not underneath or blocked by a metal surface).
 - **Good:** Orient the unit so that the Device Activation text on the back of the unit is upright. Mount the unit so that the top side of the unit has a clear view of the sky (not underneath or blocked by a metal surface).
- The device shall be installed on the equipment so that the operator is, at minimum, 20 cm away from all external surfaces of the device.



Installing AT-130

Use 1/4" or M6 bolts, washers, and nuts to mount AT-130 to its mounting location. Torque to a maximum of 15 ft-lbs.

The spacing between bolts is 114 mm, as shown below.

